

# Pronto SW



HIGHEST WORK RATE





# Pronto SW

UNIVERSAL SEED DRILL FOR ALL CONDITIONS

- Very simple, clear adjustment
- Low horsepower requirement: low weight, possibility of intermediate and side packer mounted on the machine frame
- Up to three different components can be placed on two different horizons
- DiscSystem as a front tool: 46 cm disc diameter with high circumferential speed for high fine soil production





### Machine concept

The Pronto SW concept ensures maximum efficiency for large farms after plough and for mulch seeding. The combination of the large HORSCH seed wagon (12 000 l for 8 and 9 SW, 17 000 l for 12 SW) with the Pronto seed unit results in considerable advantages with regard to stability, accessibility and flexibility. This facilitates the calibration process, the adjustment of the machine as well as all already low maintenance work. The TurboDisc seed coulters allow for speeds between 10 and 20 km/h.

### Seed unit

Transport wheels and frame of the seed unit are a fixed unit. This is basically similar to the Pronto 7 to 9 DC without seed hopper. The DiscSystem and the TurboDisc seed bar are lifted by hydraulic cylinders. The rigid drawbar of the seed unit is carried by the seed wagon and follows the seed wagon like a 1-axle trailer. The large working width up to 12 m still allows for a transport width of 3 m.

### Seed wagon

Due to the concept of the seed wagon, the filling level of the seed hopper does not influence the working depth of the seed unit. The HORSCH seed wagon concept provides large hopper capacities for working widths from 8 m. Even without filling auger, the feed openings of the seed wagon are very easily accessible as the wings of the Pronto seed unit do not affect the filling process.

Due to the double hopper system, the fertiliser can be transported along and incorporated directly in the soil via the PPF system (NOT with Pronto 12 SW 3 m transport width). A double drop tube below the metering unit allows for a mechanical or, as an option, for an electronic half-width shut-off. This avoids overlapping and also saves seed and fertiliser. A filling auger is available as an option.



TurboDisc seed coulters for precise seed placement and high coulters pressures



Pronto SW in transport position



# DiscSystem

IDEAL SEEDBED PREPARATION IN ALL CONDITIONS

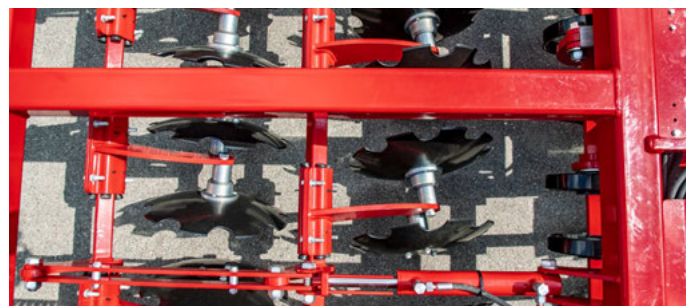


The 46 cm discs with a serrated profile achieve high rotational speeds and the penetration is excellent. The soil is mixed very aggressively, important fine soil is produced and the seedbed is levelled. Clearance is optimum as the disc elements are arranged in pairs. This additionally increases the reliability of the machine. The hydraulic depth adjustment allows for an infinitely variable adjustment while driving

- Efficient crumbling and even levelling over the whole working width
- High clearance extends the range of applications and increases reliability
- Increasing quality of work with increasing operational speed
- Hydraulic depth adjustment, infinitely variable while driving



DiscSystem Pronto DC with attachment frame for track eradicator discs



DiscSystem Pronto DC – 46 cm discs with serrated profile

# Tyre packer with AS profile

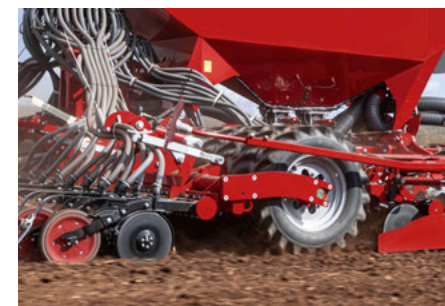
RUGGED, EFFICIENT, LOW HORSEPOWER REQUIREMENT



The HORSCH tyre packer ensures a targeted and even levelling and consolidation in front of every seed coulters. The tyres are arranged in one line. Thus, clearance is optimum even on light soils. The straight tyre profile increases consolidation. The 10-ply special HORSCH tyres ensure a long service life.

An efficient consolidation below the seed horizon guarantee a better water distribution towards the seeds. The horsepower requirement is low due to large tyre diameter and no scrapers are required.

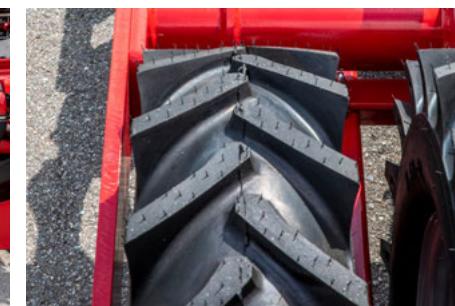
- Targeted, even levelling and consolidation in front of each seed coulters
- Straight tyre profile increases consolidation in the consolidation area
- Packer middle section also serves as a chassis for transport
- Efficient consolidation below the seed horizon for better water distribution towards the seeds
- Low horsepower requirement due to large tyre diameter and no scrapers required



Efficient consolidation below the seed horizon for better water distribution towards the seeds



Low horsepower requirement due to large tyre diameter and no scrapers required



Straight tyre profile increases consolidation in the consolidation area



# TurboDisc seed coulter

## THE THIRD GENERATION GUARANTEES A HEAD-START IN THE FIELD OF SEED PLACEMENT



A perfect embedding of the seed and an immediate seed-soil contact are important for a safe and even emergence. HORSCH perfectly copes with the challenge to achieve this objective even at high operational speeds. The solution is called TurboDisc. The double disc coulter that has been used and constantly developed further by HORSCH for more than 20 years excels due to its precise seed placement. The press wheel-controlled coulter design allows for a quick following of the soil contours at high speeds. Thus, the set placement depth can be kept up for every single grain.

The double disc seed coulter with maintenance-free bearing opens the soil and thus allows for accurate seed placement. The integrated Uniformer ensures the fixing of the seed at the bottom of the seed furrow even at very high operational speeds. A carbide coated scraper keeps the space between the discs clean and thus prevents clogging even in sticky and wet conditions. The 5 cm or 7.5 cm wide press wheel then ensures an optimum seed-soil contact and an exact depth control.

In addition to the excellent following of the soil, the TurboDisc seed bar excels due to the easy operation: with regard to their adjustment, coulter pressure and seed depth do not influence each other. The maintenance-free rubber bearings of the seed coulters transfer a coulter pressure of up to 125 kg and thus guarantee a smooth coulter – up to an operational speed of 20 km/h. Furthermore, the rubber bearing serves as an overload protection and a shock absorber for stones.

- Double disc coulter
- Creates a precise seed furrow
- Press wheel controlled (5 cm or 7.5 cm wide)
- Uniformer prevents the grains from bouncing
- Inside scraper prevents blocking and clogging of the coulters
- Coulter pressure up to 125 kg via rubber torsion
- Designed for precise seed placement at high operational speeds
- Allows for a even and safe emergence



5 cm wide press wheel – ideal on medium and heavy soils



7 cm wide press wheel – ideal on light soils



The movable scraper ensures a high self-cleaning effect in wet conditions



The HORSCH Uniformer ensures a precise fixing of the seed



The straight harrow – TurboDisc seed coulter harrow is controlled individually for a more efficient tillage



HORSCH TurboDisc seed coulter



# SW 12000/3

HIGHEST WORK RATE WITH UP TO THREE COMPONENTS

- Hopper capacity 12 000 l
- Double hopper a partition of 6 000 l : 6 000 l or triple tank with a partition of 4 000 l : 2 000 l : 6 000 l
- Reduction of filling stops due to the large hopper capacity
- Application of fertiliser and seed
- High work rate
- Large tyres reduce compaction



Double hopper a partition of 6 000 l : 6 000 l or triple tank with a partition of 4 000 l : 2 000 l : 6 000 l



Application of fertiliser and seed

# SW 17000/3

- Hopper capacity 17 000 l
- Double hopper with a partition of 8 500 l : 8 500 l or triple tank with a partition of 4 000 l : 6 500 l : 6 500 l
- Reduction of filling stops due to the large hopper capacity
- Application of fertiliser and seed
- High work rate
- Large tyres reduce compaction



Double hopper with a partition of 8 500 l : 8 500 l or triple tank with a partition of 4 000 l : 6 500 l : 6 500 l



Large tyres reduce compaction

# Hydraulic filling auger

SIMPLE FILLING TECHNOLOGY FOR EVERYONE

Due to the hydraulically operated filling auger, the Pronto NT can be filled quickly and easily with fertiliser and seed.

- For an autarkic filling
- Driven hydraulically, operated with a stop valve
- Output: 800 kg/min



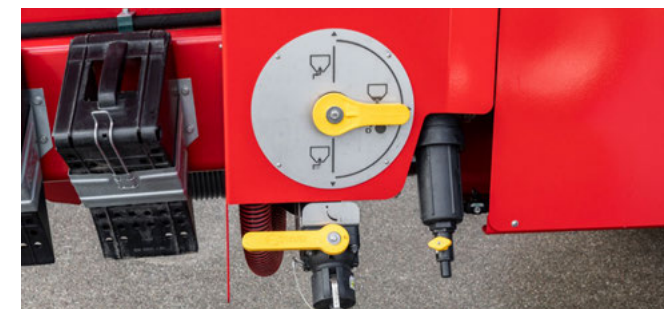
Hydraulic filling auger for an autarkic filling



Output 800 kg/min

# Liquid fertiliser

- Option for liquid fertiliser in the second or third hopper
- Can be combined with tine or fertiliser disc systems for Sprinter 15 NT, Pronto SW or Pronto NT
- Unnecessary losses are avoided due to direct application into the soil
- Easy and clear operation



Easy and clear control elements



Option for two other components like solid fertiliser and seed in the second and third hopper



# INTELLIGENCE

## eosT10 (Pro)

- High-resolution 10" terminal for controlling all ISOBUS devices according to ISO 11783
- Reliable and powerful: a high-performance hardware combined with an intuitive, user-friendly operation in daytime or night mode
- Straightforward transfer of application maps with the wireless Task Data Exchange
- Various layout options allow for a simultaneous display of several applications – for an optimum overview
- eosT10 and eosT10 Pro – one hardware, completed by two licence kits. Precision is always standard for us.



By displaying up to 3 widgets in addition to the main working screen, the user can keep track of several applications at the same time

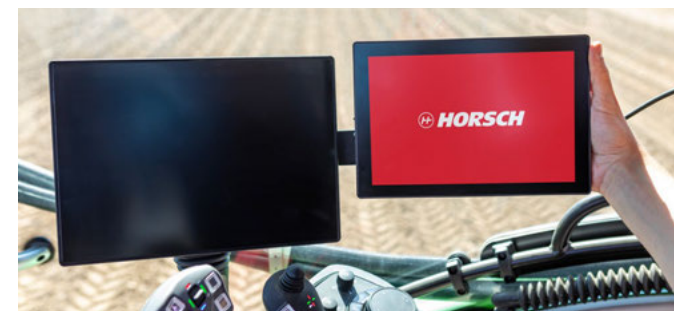
## Rotor selection

- Facilitates the selection of the optimum rotor for any application
- Wide selection range from normal seeds to fine seeds to fertiliser and micro-granular compound
- Expert mode to carry out rotor configurations also for variable operating speeds and application rates



## AutoLine

- Automatic, GPS-based tramline control
- Optimised driving strategy near obstacles or on the headlands
- Track-to-track driving is no longer required
- Available in combination with the terminal eosT10 Pro



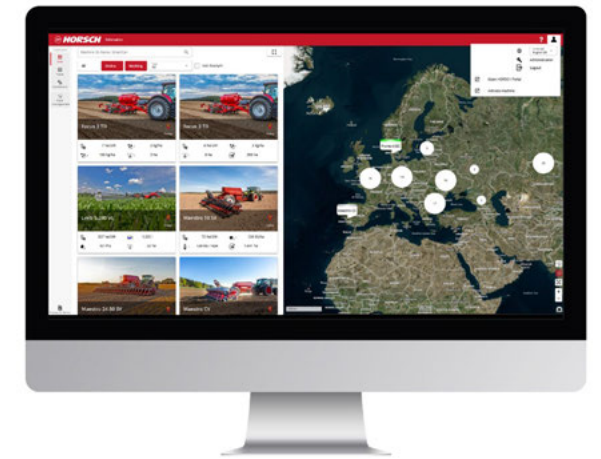
Due to the flexible holder, the eosT10 can be perfectly integrated in every cabin



The rotor selection app facilitates the selection of the optimum rotor for any application

## HorschConnect

Prepare today for tomorrow. Control different machine functions quite easily via the MobileControl app – your smartphone replaces the terminal! In addition, gain complete, transparent insight in all aspects of work performance and working quality with HorschConnect Telematics.



With HorschConnect telemetry solutions can be found in the sowing and plant protection sector – exactly where they make sense

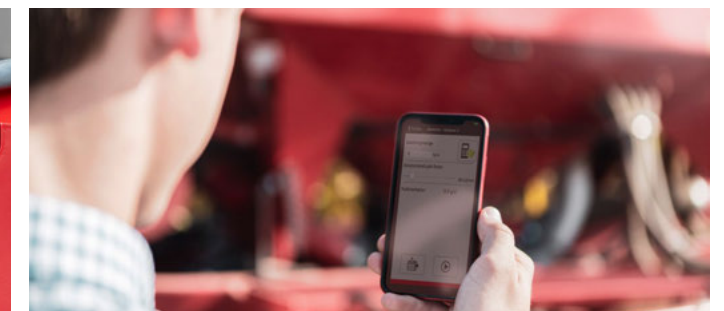
- Digital solutions exactly where they make sense
- Straightforward out-of-the-box solution with integrated SIM card, WLAN modem and other interfaces
- HorschConnect Telematics to document the performance of the machine
- HorschConnect Telematics for complete transparency of the working quality, e.g the application rate of all components
- Control of machine functions via the smartphone app MobileControl
- Control of machine functions via smartphone app MobileControl: e.g. calibration of all metering units



The MobileControl app allows for controlling individual machine functions – completely comfortably from the smartphone



Uncomplicated out-of-the-box solution with a wide range of integrated interfaces



Quick and easy calibration of the machine via smartphone with the MobileControl app



# TECHNICAL DATA

Pronto SW	8 SW	9 SW	12 SW
Working width (m)	8.00	9.00	12.00
Transport width (m)	3.00	3.00	5.30
Transport width with SW 17000 SD (m)	---	---	5.50
Transport height (m)	3.95	4.00	4.90
Transport height with SW 17000 SD (m)	---	---	3.60
Length without seed wagon (m)	8.50	8.50	7.70
Length with SW 12000 SD (m)	15.50	15.41	---
Length with SW 17000 SD (m)	---	---	16.00
Weight without SW from (kg)	9060	9740	14050
Weight with SW 12000 SD (kg)	12520	13200	---
Weight with SW 17000 SD (kg)	---	---	19110
Hopper capacity seed waggon (l)	12000 (50:50)	12000 (50:50)	17000 (50:50)
Dimension of the feed openings (m)	per 0.99 x 0.72	per 0.99 x 0.72	per 0.99 x 0.72
Filling height double hopper (m)	3.35	3.35	3.55
Number of PPF coulters	26	30	40
Coulter pressure PPF coulters (kg)	up to max. 200	up to max. 200	up to max. 200
Number of seed coulters	52	60	80
Coulter pressure (kg)	5 - 120	5 - 120	5 - 120
Seed coulters/press wheels Ø (cm)	34/32	34/32	34/32
Row spacing (cm)	15.4	15.0	15.0
Tyre packer size	7.50-16 AS	7.50-16 AS	7.50-16 AS
Tyre packer Ø (cm)	78	78	78
Operational speed (km/h)	10 - 20	10 - 20	10 - 20
Horsepower requirement (kW/hp)	155/210 - 215/290	235/320 - 330/450	330/450 - 440/600
DA control devices	2	2	2
Depressurized return flow (max. 5 bar)	1	1	1
Oil quantity hydr. fan (l/min)	50 - 60	50 - 60	70 - 90
Implement attachment adjustable drawbar (mm)	Pin Ø 50 - 55 a. 60 - 70	Pin Ø 50 - 55 a. 60 - 70	Pin Ø 60 - 70
Implement attachment ball head	K 80	K 80	K 80







Your distributor

**HORSCH Maschinen GmbH**  
Sitzenhof 1 · 92421 Schwandorf  
Phone: +49 9431 7143-0  
Fax: +49 9431 7143-9200  
E-Mail: [info@horsch.com](mailto:info@horsch.com)

**[horsch.com](http://horsch.com)**

Paper: 120g/qm Maxi Offset. The paper is certified according to the EU Ecolabel. This label is only granted for products and services whose environmental consequences are considerably lower than those of comparable products. For more details see [www.eu-ecolabel.de](http://www.eu-ecolabel.de). Printing ink: Printing ink QUICKFAST COFREE. Free from mineral oil and cobalt. Moreover, it is certified and recommended for printing according to the „Cradle-to-Cradle“ principle (quasi “from the origin back to the origin”) – an approach that deals with the spreading of continuous and consequent recycling management. For more details see [www.c2c-ev.de](http://www.c2c-ev.de).

All specifications and diagrams are approximate and not binding. Technical features and design are subject to change.

EN-60142507 (53/2024)